



**BETTER WITH AGE.
EXCEPTIONAL
WITH US.**

THE ACKERLY
AT REED'S CROSSING

TABLE OF CONTENTS

- [Let Us Show You Around](#)
- [The Leisure Care Difference](#)
 - [A Focus on Wellness](#)
 - [Signature Programs](#)
 - [Discover What's Next](#)
- [About The Ackerly At Reed's Crossing](#)
 - [Independent Living | Pricing](#)
 - [Assisted Living | Pricing](#)
 - [Memory Care | Pricing](#)
 - [Amenities | Senior Living](#)
 - [Amenities | Memory Care](#)
 - [Floor Plan | Studio | 396–430 Sq Ft](#)
 - [Floor Plan | One Bedroom | 582–747 Sq Ft](#)
 - [Floor Plan | Two Bedroom | 845–1182 Sq Ft](#)
 - [Floor Plan | Memory Care | Private Studio | 368–377 Sq Ft](#)



YOU SET THE PACE. WE'LL KEEP UP.

You aren't wrapping up your life's journey. You're seeking a new one. Explore, adventure, and have a whole lot of fun with us at Leisure Care.

Let us show you around.



THE LEISURE CARE DIFFERENCE.

For nearly 50 years, we've been reimagining and reinventing senior living to make sure people like you have the most fulfilling, rewarding, and productive opportunities possible. So rather than sitting in a rocking chair, you can keep on rocking—and we're here to help you do just that.

Retirement? Game on.



OUR APPROACH TO WELL-BEING.

We believe a life filled with joy and purpose begins with five essentials of wellness.



A Focus on Wellness

PHYSICAL

Our PrimeFit instructors and fitness centers work with each resident to improve strength, mobility, and balance. This individualized approach, partnered with focused nutrition and therapies, has helped our residents attain once-out-of-reach fitness goals, run 5ks, walk grandchildren down the aisle, and make positive and significant changes in their physical health.

MENTAL

Discover a mentally supportive and stimulating lifestyle through signature programming like BrainHQ. BrainHQ by Posit Science has been shown to improve cognitive health through 29 scientifically backed brain-training games with personalized programs that keep you sharp and focused.

EMOTIONAL

Whether you're an artist, writer, poet, or community collaborator, residents here have the freedom and space to create art and experience culture. Get inspired at art shows featuring resident work, writer workshops, poetry readings, and more.

SOCIAL

Dynamic activity calendars, resident-run clubs, and travel experiences come together to create a strong sense of community where meaningful connections are cultivated. You can trust there will always be something fun and social to do here.

COMMUNAL

Our residents and team members make meaningful contributions to the areas where they live, work, and play. We are a community that gives back and does it well. Food drives, school supply drives, mentorship opportunities, educational scholarships, Alzheimer's awareness events, and fundraisers (just to name a few!) are all a part of life here with us.



Signature Programs

WELLNESS, BEYOND THE BASICS.

Our signature programs are designed to provide new and innovative ways to help our residents rediscover, reinvigorate, and occasionally even reinvent themselves.

PRIMEFIT WELLNESS is how well-being and living well come to life. By focusing on five essential parts of our resident's health—social, physical, mental, emotional, and communal—our community champions proactive wellness through exceptional dining, intentional movement, and an exciting social calendar.

TRAVEL BY LEISURE CARE brings adventure of all kinds to our residents—and brings our residents to adventure! We'll help them plan it all, from a family reunion to a spontaneous day trip.

OPAL IS LEISURE CARE'S signature approach to serving residents with cognitive impairment, meeting them and their families where they're at in their unique journey. Our independent or assisted living communities tailor care and service plans to create an environment of empathy and support. And in our secure Opal neighborhoods, everything from programs to dining is designed specifically for those with dementia. Here, every resident can thrive.



**LIVE YOUR LIFE.
FORGET
YOUR AGE.**

Discover what's next.



Welcome home to The Ackerly at Reed's Crossing.

More than a retirement community, The Ackerly at Reed's Crossing is a place you will be proud to call home. Located in the heart of Reed's Crossing's town center, The Ackerly provides residents unparalleled access to the conveniences of a planned community, miles of walking trails, and all the luxuries of a resort-style vacation.

Where you can build your community while enjoying ours. Community is what it's all about. Allow the Ackerly to serve as your backdrop as you explore all the possibilities of retirement. Try a yoga class with friends, invite new neighbors for happy hour, or celebrate a special occasion in our private dining room. It's all yours for the taking at The Ackerly at Reed's Crossing.

Where help is just around the corner. For additional peace of mind, our immediate neighbors include Providence Reed's Crossing Health Center, offering personalized health services to prioritize your well-being.

Where the expectation is excellence. Everything about The Ackerly at Reed's Crossing is designed to increase your joy. Proactive wellness, balanced care services, and endless opportunities come together as you embrace joy and purpose every day.

We can't wait to welcome you home to The Ackerly at Reed's Crossing.





INDEPENDENT LIVING

Studio from \$3,800
 One-Bedroom from \$4,300
 Two-Bedroom from \$6,000
Individual apartment pricing may vary.

MONTHLY RENT INCLUDES

Weekly housekeeping and linen service, 31 complimentary meals in our restaurant, scheduled transportation, social and recreational programs, unlimited use of all activity areas, emergency communication system, staff available 24 hours a day, routine apartment maintenance, complimentary use of laundry facilities, public WiFi available and all utilities except telephone and cable.

ADDITIONAL SERVICES & FEES

Second Person Fee \$500/month
 Pet Fee \$35/month
 Reserved Parking \$50/month
 Covered parking \$75/month
 Residency Fee (one time) one month's rent





ASSISTED LIVING

Studio	from \$4,700
One-Bedroom	from \$5,700
Two-Bedroom	from \$7,300

Individual apartment pricing may vary.

MONTHLY RENT INCLUDES

Three meals daily plus complimentary snacks, weekly housekeeping and linen service, all utilities except telephone and cable, social and recreational programs, unlimited use of all activity areas, scheduled transportation, staff available 24 hours a day, emergency communication system, daily resident check, complimentary use of laundry facilities, public WiFi available and routine apartment maintenance.

ADDITIONAL SERVICES & FEES

Second Person Fee	\$750/month
Pet Fee (one-time)	\$35/month
Emergency Pendant Fee (one-time)	\$150
Residency Fee (one-time)	one month's rent

ASSISTED LIVING CARE SERVICES

Level 1	\$750
Level 2	\$1,150
Level 3	\$1,650
Level 4	\$2,050

Ask our team for information regarding higher levels of care.

What if you need basic assisted living services, nothing too fancy? No problem at all. We have everything you'd expect – medication assistance, showering and bathing, dressing, personal appearance and hygiene, care coordination, mobility assistance, health maintenance, cognitive support, and more. It's just that we deliver it all with the utmost care, making sure you are comfortable and getting precisely what you want as service needs grow or diminish. That's right—our services are that flexible – easily added or scaled back as you desire.

Assisted living care fees are in addition to the monthly rent and are determined by an assessment of your individual needs and preferences by the care team. Please contact our care team for more information.



MEMORY CARE

Private Studio from \$8,300
Individual apartment pricing may vary.

MONTHLY RENT INCLUDES

Three meals daily, weekly housekeeping and linen service, weekly personal laundry service, daily bed making and trash removal, social and recreational programs, use of activity areas, scheduled transportation, staff available 24 hours a day, general apartment maintenance, and all utilities except telephone and cable.

ADDITIONAL SERVICES & FEES

Residency Fee (one time) one month's rent

MEMORY CARE SERVICES

Level 1	\$775
Level 2	\$1,275
Level 3	\$1,775
Level 4	\$2,275

Ask our team for information regarding higher levels of care.

As you very well know, when a loved one is challenged with dementia the entire family is challenged. It's difficult to adjust, there is no doubt. So, let us start by saying we understand. Let us also say that we've found that sometimes the hardest part is simply asking for help. Naturally, the emotions run high and the family dynamics run deep. Suffice it to say, we can help relieve the stress.

We think you'll find Opal, our signature memory care program, to be profoundly helpful. It's all about getting to know each person, drawing on his or her life story, and giving meaning and purpose to each new day. With help, you may just find that "family" happens again.

Our staff works with residents to establish comforting routines, adjust to changing motor skills and dietary needs, and create personalized meals whenever needed. Meals can be served in a social setting or in a quiet area, depending on how each person feels that day. Here, flexibility is key.

Dementia affects every aspect of life and our staff is specially trained to understand how dementia affects the dining experience. From the tableware and silverware to the entrée options and social opportunities, our expertly trained staff acknowledges the changes that come as dementia progresses.

COMMUNITY FEATURES & AMENITIES

- Beautifully landscaped grounds with walking paths, gardening areas, and bocce ball
- Full-service restaurant and private dining room with chef-prepared fresh, farm-to-fork inspired meals
- Bistro offering grab-and-go breakfast and light fare offerings for lunch and dinner along with a selection of beer, wine and cocktails
- In-Room Dining
- Billiards and Game Area
- Library
- Theater
- Full-service Salon and Spa
- Computer available with complimentary WiFi
- Complimentary laundry facilities
- Health and Wellness Center
- Weekly Housekeeping and Linen Service
- PrimeFit Wellness Program

APARTMENT FEATURES & AMENITIES

- Spacious studio, one- and two-bedroom apartments
- Kitchens with solid surface counters and stainless steel appliances in most apartments
- Washers and dryers in all one- and two-bedroom apartments
- Patios available in some first floor apartments
- Individually controlled heating and air-conditioning
- Carpet and luxury vinyl plank flooring
- Window coverings
- Large walk-in closets
- Emergency communication system

- Onsite Physical and Occupational Therapy
- Balance Builders multi-dimensional balance-building program
- Travel by Leisure Care full-service travel agency
- Brain Fitness Program
- Full calendar of fun and engaging programs, events and activities
- MyLeisure Care App for managing activities, appointments, and service requests
- Personalized resident services
- Regularly scheduled shuttle service
- Off street parking, including some reserved and covered spaces
- Assisted living and memory care services available



COMMUNITY FEATURES & AMENITIES

- Contemporary design built specifically to accommodate people with memory impairments
- Dedicated staff specializing in dementia care are available 24/7
- Full-service restaurant and private dining room with chef prepared fresh, farm-to-fork inspired meals.
- Secure outdoor courtyard
- Beautifully landscaped grounds with walking paths, gardening areas, bocce ball and shuffleboard
- PrimeFitSM fitness and wellness program
- Balance Builders multidimensional balance building program
- Travel by Leisure Care full-service travel agency
- Extensive calendar of events, presentations, and entertainment
- Art classes
- Gardening therapy program
- Surround sound theater
- Salon and spa treatments
- Social and cultural events
- Guest lectures and seminars
- Regularly scheduled housekeeping and linen service
- Transportation services
- Brain fitness program
- Access to onsite physical and occupational therapy

APARTMENT FEATURES & AMENITIES

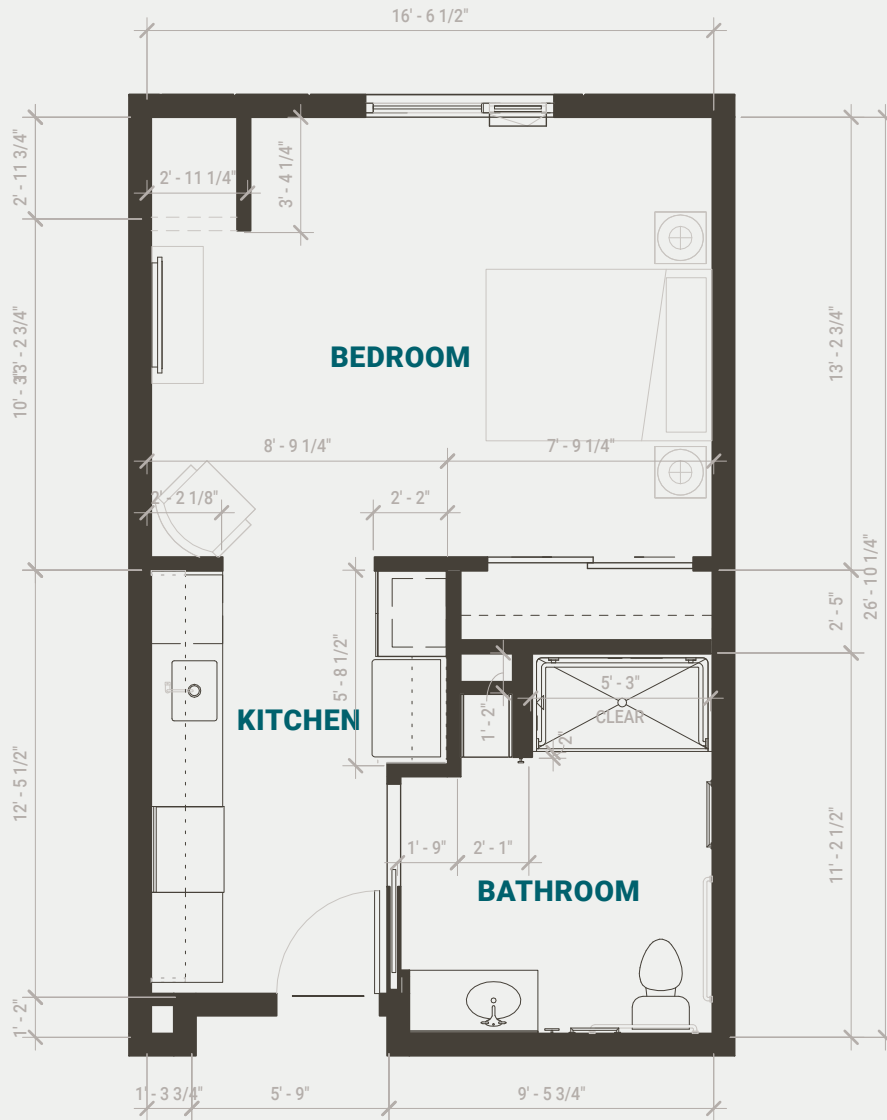
- Private studio suites ranging from 368-377 square feet
- Individually controlled heating and air conditioning
- Nine-foot ceilings
- Walk-in shower
- Safety grab bars in bathroom and shower
- Emergency call systems





FLOOR PLAN – SENIOR LIVING

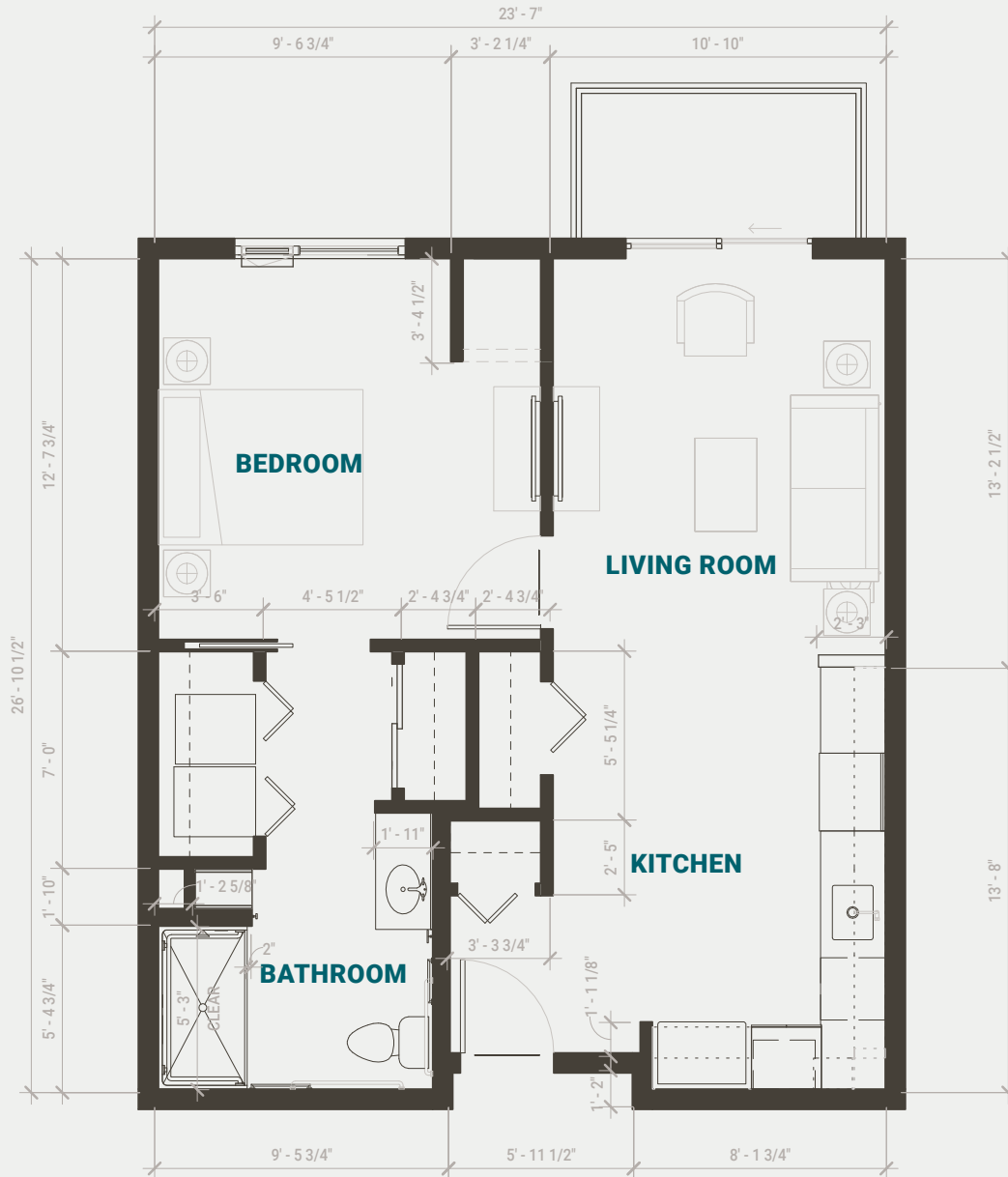
STUDIO | 396–430 SQ FT





FLOOR PLAN – SENIOR LIVING

ONE BEDROOM | 582–747 SQ FT

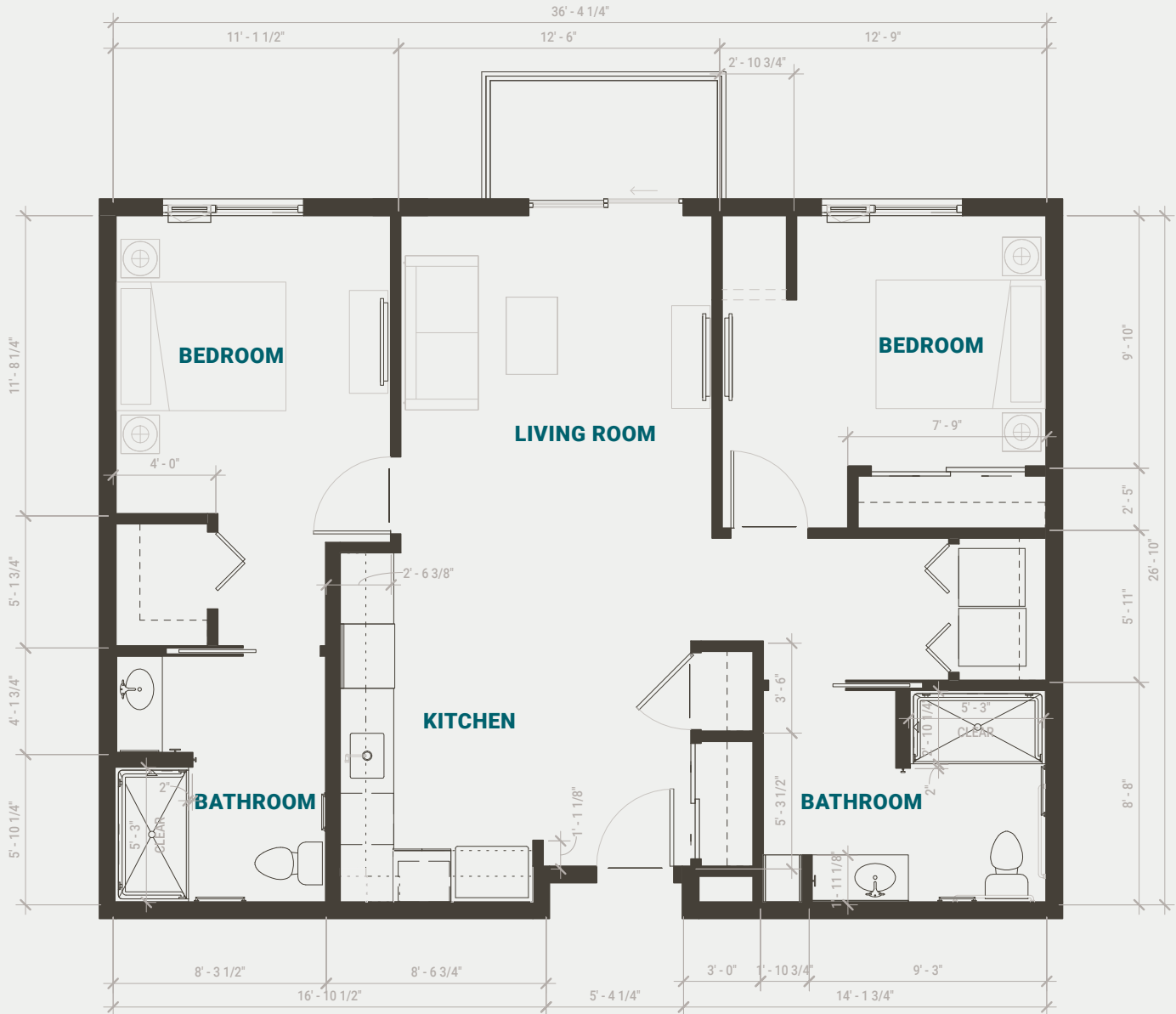


THE ACKERLY
AT REED'S CROSSING



FLOOR PLAN – SENIOR LIVING

TWO BEDROOM | 845–1182 SQ FT

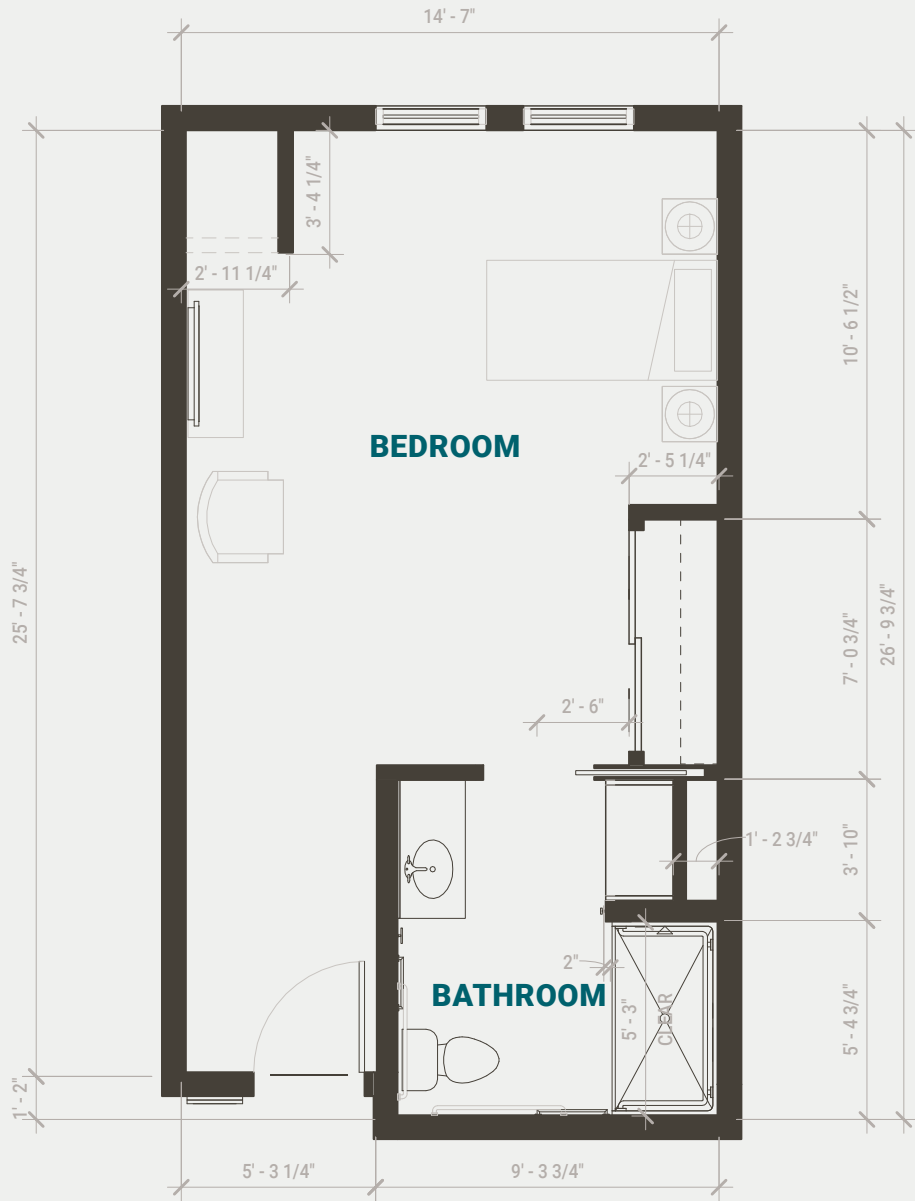


THE ACKERLY
AT REED'S CROSSING



FLOOR PLAN – MEMORY CARE

PRIVATE STUDIO | 368–377 SQ FT





THE ACKERLY
AT REED'S CROSSING

T: 503-714-8311 W: AckerlyAtReedsCrossing.com

 **LEISURE CARE**