

Welcome to Mukilteo Memory Care!



We are very happy to share information with you and encourage you to come in and visit with us. Being at Mukilteo Memory Care is the best way to feel the “*MMC Difference*” and experience our Community first hand.

We look forward to seeing you soon!

Call us! We care. (425) 267-0808

4686 Pointes Drive | Mukilteo, WA 98275

www.mukilteomemorycare.com

Services & Amenities

Welcome to

Mukilteo Memory Care

Mukilteo Memory Care is a new community purposely designed and built to care for Residents with Alzheimer's and other related memory impairments. Our personal care Resident-centered program, life enrichment activities, as well as partnerships with healthcare professionals make Mukilteo Memory Care a leader in the Mukilteo and Harbour Pointe area.

Our team members strive to provide customer service excellence, and a friendly and warm environment where Residents and family members feel at home and well taken care of. Our Community features beautiful interior design, easy pathways for Residents, a variety of social and activity areas, restaurant-style dining room on each floor and a wonderful outdoor courtyard including gardening area, water feature and benches for relaxing and enjoying fresh air.



Our Location

Located in the upscale planned community development of Harbour Pointe, the Community offers a great location with easy access off the Mukilteo Speedway, within five (5) miles of Alderwood Mall, a major shopping destination, as well as the Ferry Terminal to Whidbey Island. The Community is nestled on the corner of Harbour Pointe Boulevard and Harbour Reach Drive and next to the Village Center complex. The Community is also close to the Harbour Pointe Golf Club, and the Harbour Pointe Shopping Center which features QFC grocery store, Rite Aid, Chase Bank, and many other retail shops and stores. Our great location on Harbour Pointe Boulevard makes it easy to walk and enjoy the established sidewalks and paths throughout the neighborhood, as well as an excellent choice for families who are seeking an easy stop to visit loved ones.

Your Monthly Base Rent at Mukilteo Memory Care includes:

- Room and board for your suite
- Three delicious restaurant-style meals daily
- Social, recreational and life enrichment programs
- Weekly housekeeping and linens
- Basic cable
- Water, sewer, electricity
- 24-Hour staff

Features at Mukilteo Memory Care:

- Beauty/Barber salon on-site
- Exercise and physical therapy room
- Family room with fireplace
- Free washers and dryers for families who prefer to do loved ones' personal laundry
- Comfortable, restaurant-style dining room on each floor
- Courtyard and water feature
- Bistro area for daily refreshments and snacks
- Scheduled transportation bus for outings and medical appointments
- Aquariums on each floor for resident enjoyment
- Life Enrichment areas throughout each floor to encourage Resident interaction and activity

Family Support

At a time when residents need support and care, so do family members and caregivers. We offer information and resources on group and family support and you're always welcome to stop in for a cup of coffee or to visit with us. We encourage families to be involved on an ongoing basis by attending special events and support groups, joining us on outings, or becoming involved in our daily activities.

Life Enrichment Program

Our activities program offers opportunities for our residents to experience and enjoy things that have been part of their life routines. Gardening, outings, music, spiritual offerings, singing, arts and crafts, and dancing offer residents a variety of choices to be as active as they wish. Our goal is to provide a meaningful quality of life each day.

Assisted Living Services

- Caregivers and nursing assistance 24-hours a day
- Medication management
- Assistance with bathing, dressing and grooming
- Incontinence management program
- Ancillary and personal care products offered
- Routine communication with physician and healthcare providers
- Partner with hospice and other supportive service providers

Our goal is to embrace individual care needs through a variety of supportive services in a non-institutional environment.

Our Executive Director, in conjunction with our Wellness Director, will schedule a "Get Acquainted" meeting in which Resident needs and requests are discussed and we learn more about the important lifestyle routines for you or your loved one. Doing so helps us in tailoring a customized personal service plan to encourage individual strengths, capabilities and needs. This Get Acquainted visit enables us to determine the cost of your care and service plan.



4686 Pointes Drive, Mukilteo, WA 98275 | (425) 267-0808 | info@mukilteomemorycare.com

www.mukilteomemorycare.com



Mukilteo Memory Care Respite... We'll Take Care of You!

Is your loved one recovering from a hospital stay, illness or surgery? Maybe you are planning to be away on a trip? Maybe you're wondering how to give your loved one's caregiver a well-earned break—or maybe take a little break yourself?

We offer Respite for Families who are looking for short-term quality care. Whether your loved one needs to stay for a week to a full month, you'll find the recreation, relaxation and care you're looking for—because after all, rest and care is what Respite is all about.

Our full range of services and amenities allow your loved one to rest and recuperate. Our Respite Program also offers families and caregivers a chance to enjoy their own time, with the comfort of knowing that their loved one is in a comfortable, caring setting.

Some of our features and services include:

- Three delicious meals
- Full Life Enrichment Program
- Weekly Housekeeping
- 24-Hour Caregivers
- Bathing, Dressing, Grooming Assistance
- Medication Management
- Incontinence Management
- Assistance to and from dining room
- Individual Service Plans
- All Inclusive Rate Available



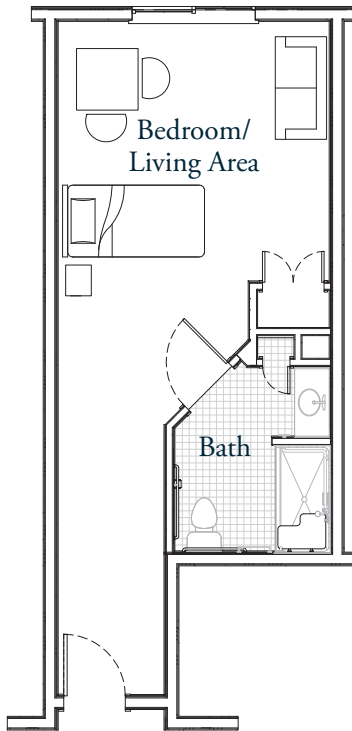
Mukilteo
memory care
at Harbour Pointe
4686 Pointes Drive
Mukilteo, WA 98275
www.mukilteomemorycare.com

For more
information, call
(425) 267-0808

Apartment Floorplans

Suite A

approx. 376 sq. ft.



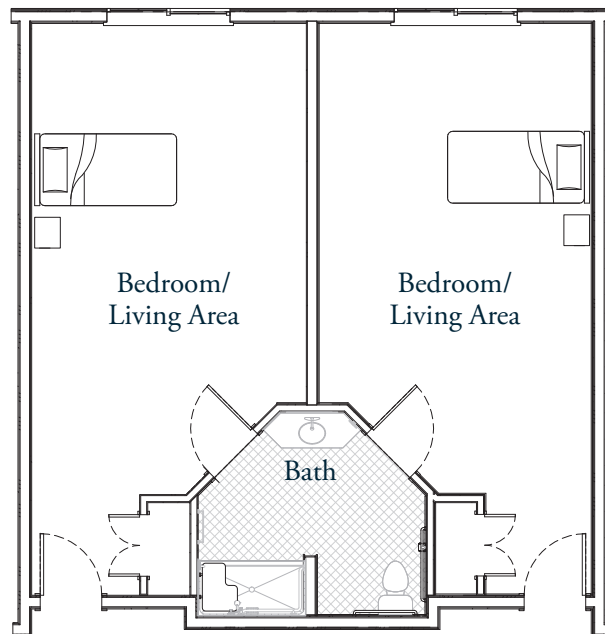
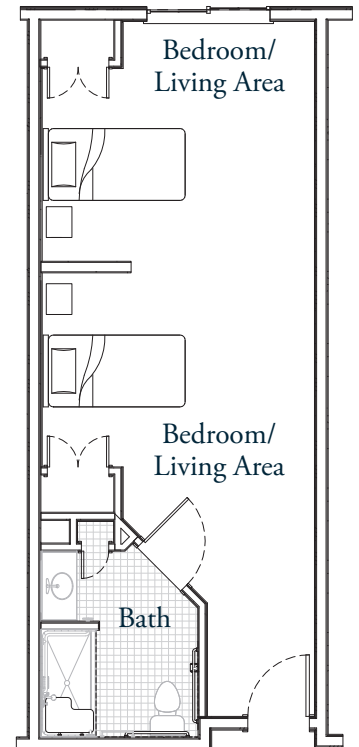
Suite B

approx. 373 sq. ft.



Suite C

approx. 450 sq. ft.



Suite D

approx. 752 sq. ft.

Community Layout

LEVEL ONE — Mukilteo Memory Care



4686 Pointes Drive
Mukilteo, WA 98275
(425) 267-0808

www.mukilteomemorycare.com

Community Layout

LEVEL TWO — Mukilteo Memory Care



4686 Pointes Drive
Mukilteo, WA 98275
(425) 267-0808

www.mukilteomemorycare.com