

We believe *life* should
improve *with* age.

Allow us to introduce ourselves.



We're Senior Resource Group—SRG. For over 30 years, we've been developing and operating award-winning senior living communities throughout the United States. Although we're known for our distinctive designs and innovative amenities, it's common knowledge to everyone who lives and works with us that SRG senior living communities are fueled by our passion. We're truly driven by the desire to create environments that enhance the quality of people's lives.

Our success is rooted in the idea of hospitality. But it goes beyond just being well mannered. We strive to take care of our residents and our employees in a way that brings the two together as one extended family.

We work tirelessly to anticipate the future. At SRG, our residents tell us everything we need to know about who they are and how they want to live; and their input guides us in everything we do.

Ultimately, the SRG lifestyle is all about choice and independence. It's about savoring the daily experiences of life and cherishing connections—now, and into the future.

Your comfort is our passion.



We put people first in everything we do, from the day-to-day living experiences of our residents to creating the best communities and working environments possible.

And, while we pride ourselves on the daily delivery of quality service, it's the elevation of hospitality to a new level—an innovation we call Genuine Hospitality—that truly sets SRG apart. Our residents are neither guests nor strangers; they are the constant that defines our communities—where exceptional service is delivered by a dedicated group of people who truly believe our residents well-being and quality of life is their personal responsibility.

At SRG, our goal is to create comfortable, service-enriched environments that encourage residents to choose, to express themselves, and to live fully.

A blueprint for living well.



At SRG, we embrace wellness as a way of life. Healthy living means so much more than just exercise and nutrition; it's a person-centered approach that focuses on meeting the needs of the individual as a whole. Ours is a comprehensive philosophy that addresses the physical, emotional, intellectual, social, spiritual, and vocational well-being of our residents.

We recognize that mind, body, and spirit are all interconnected, so we've made it our goal to strengthen those connections through a robust offering of supportive programs, services, and amenities. By taking a holistic approach to wellness, we can provide a customized program for

each individual that includes nutrition and fitness opportunities, exercise classes, preventative health workshops, wholesome dining options and the knowledge, resources, and motivation to create a personalized blueprint for living well. Additionally, we encourage community members to work together to set goals, support progress, and celebrate and reward achievement.

By integrating all six areas of wellness, SRG communities promote healthy living and encourage residents and staff alike to lead balanced, productive lives.

When needs change, we're ready.



Our residents and their families will also find comfort in knowing that even if their needs change, their address doesn't have to. Should the necessity for care arise, they'll find a thoughtful and comprehensive menu of programs and services available on-site to meet their individual requirements today and tomorrow.

Here, a personalized program of care, provided in the comfort of their home, affords residents the freedom and independence to live life as they choose. And, as their needs may grow and change, our Director of Assisted Living and licensed professional staff are there to provide the services required to meet those needs each and every day. For those requiring specialized Alzheimer's Disease/Dementia care services, Enliven™—our creative and adaptive memory care helps residents feel more connected and as independent as possible by focusing on their strengths and abilities, not impairments.

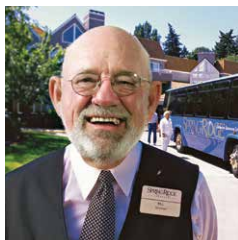
Seeking a higher standard.



We take the health of our residents seriously, which is why we pursued accreditation. In 2004, SRG became the first major senior living provider in the U.S. to earn across-the-board accreditation of its eligible communities by the Commission on Accreditation of Rehabilitation Facilities, or CARF. Throughout North America and Western Europe, CARF is recognized as the leading independent accreditation body for providers of health and human services. Even though federal and state guidelines don't require licensed senior living communities to be accredited, we think it's an important distinction.

As part of our promise to you, SRG's accredited retirement communities will continue to voluntarily participate in CARF's accreditation process to ensure our programs and services maintain their measurable quality standards.

More than a service. A privilege.



On a whole variety of fronts, from high tech to high touch, we do everything we can to engender a reassuring sense of comfort and understanding for our residents and their families as needs arise. We are honored to have the opportunity to make a difference in the lives of those we touch—our residents, their family members, and our employees.

We like to say that life should improve with age. After more than two decades in the business, it's certainly been true for us. It's our job to make sure our residents—and team members—feel the same way.

NorthWest

P L A C E



Imagine living in a neighborhood where you are surrounded by award-winning restaurants, shopping, boutiques, banks, parks, medical facilities and authentic Victorian style homes. And coming home to an engaging blend of comfort, style, fine dining, endless social opportunities, and supportive health and wellness programs. Welcome to distinctive retirement living at NorthWest Place.

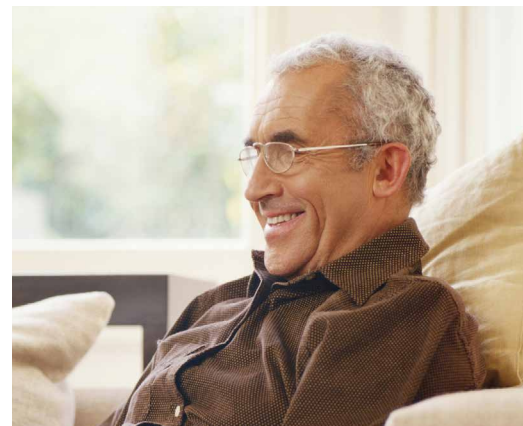
WELCOME TO NORTHWEST PLACE

Discover retirement living the way you always imagined it would be—a beautiful vibrant setting featuring distinctively designed residences, a host of luxurious amenities and services and a dedicated, professional staff available to meet your needs 24 hours a day.

Conveniently located in Portland's scenic and quaint NorthWest District with walking distance to shopping, restaurants, local art galleries and riverfront trails, our award-winning community offers an impressive array of resort-style amenities—each designed with you in mind. Here, you'll enjoy your own beautifully appointed one- or two-bedroom residence complete with all electric kitchens, private patios, washer and dryer, and individual climate controls. Add to that our comprehensive menu of services and programs and you'll surely delight in the catered lifestyle that defines NorthWest Place.

At NorthWest Place, you'll find the retirement lifestyle that's just right for you—it's the perfect blend of independence, comfort, and convenience.





YOUR LIFESTYLE CONTINUES HERE

At NorthWest Place, your days belong entirely to you. Enjoy an afternoon of shopping or a leisurely walk through our quiet, refined neighborhood. Join an off-site expedition in our comfortable bus or relax with a bestseller on our covered porch or rooftop garden. Try a gourmet meal at one of the nearby restaurants or join friends in our own Cascade Dining Room. At NorthWest Place, you'll enjoy the freedom and flexibility to do as much—or as little—as you like.

- Cascade Dining restaurant
- Rooftop garden area
- Convenient elevators
- Spacious covered front porch
- Private meeting/dining rooms
- Activities programming
- Lobby and comfortable lounges
- Patio
- Reception desk
- Gated secure garage

SEEKING A HIGHER STANDARD



At SRG, we take the health of our residents seriously, which is why we have pursued accreditation. Throughout North American and Western Europe, the Commission on Accreditation of Rehabilitation Facilities (CARF) is recognized as the leading independent accreditation body for providers of health and human services. And though federal and state guidelines don't require senior living communities to be accredited, we think it's an important distinction. In 2014, NorthWest Place became one of the first senior living communities in the U.S. to achieve accreditation for independent living. And that's no small feat. By skillfully demonstrating comprehensive conformance to more than 1000 elevated CARF standards, NorthWest Place has earned CARF's highest level of accreditation—comparable to a five star rating in the hospitality industry.

YOUR COMFORT. YOUR WAY.

For more than 30 years, Senior Resource Group (SRG) has been developing and operating award-winning senior living communities throughout the United States. Although we're known for our distinctive designs and innovative amenities, it's common knowledge to those who live and work with us that SRG senior living communities are fueled by our passion. We're truly driven by the desire to create environments that enhance the quality of people's lives. And, while we pride ourselves on the daily delivery of quality service, it's the elevation of hospitality to a new level that truly sets SRG apart. We are committed to making you the center of our attention. This philosophy is our pledge to Genuine Hospitality. By creating comfortable, service-enriched communities we hope to encourage residents to choose, to express themselves, to live life fully. We are honored to have the opportunity to make a difference in the lives of those we touch—our residents, their family members, and our employees. Delivering on our promise of Genuine Hospitality isn't just our job, but rather, our privilege.

2420 NW Marshall Street • Portland, OR 97210 • P: 503.221.2075 • F: 503.221.3024 • SRGseniorliving.com

WELL-BEING THAT'S, WELL, *FUN*



The idea behind our innovative, engaging wellness program, **ZEST™**, is pretty simple: bringing healthy, positive balance to the Mind, Body and Soul with a wealth of personalized, enriching experiences. From trying something for the first time to exploring passions old and new, ZEST is all about energy. Because when we feel energized and happy, we enjoy life more every day.

ZEST inspires the mind through creative and intellectual expression. We work to keep the body in tune through daily motion and attention to nutrition. With our plant-based and whole-food focused FreshZest™ dining options, it is easy to enjoy fine dining AND make small but impactful lifestyle changes. And for the soul, our approach is as social as it is spiritual—personal connection, a bit of purposeful reflection and plenty of carefree interaction. Actually, it can be as simple as taking a moment to breathe.

Contact us today to learn how ZEST can bring more well-being to your daily life.



NorthWest
PLACE

INDEPENDENT LIVING RESIDENCES

2420 NW Marshall Street, Portland, OR 97210 | NorthWestPlaceSeniorLiving.com | **503.221.2075**



EQUAL HOUSING OPPORTUNITY

AN SRG SENIOR LIVING COMMUNITY





MORE THAN “JUST” WELLNESS

We believe that wellness is a key factor in living your best life, longer. That’s why our ZEST wellness program takes an evidence-based, 360-degree approach to well-being that draws from best practices from a range of disciplines, like medicine, psychology, behavioral science, as well as SRG’s more than 30 years of experience in senior living.

Led by Dr. Sarah Cunningham-Matyko, OTD, OTR/L, CDE, CPT, SRG’s Director of Life Enrichment, ZEST is designed to help our residents feel their best every day. And even more, with the help of a dedicated on-site team, residents can benefit from preventive health strategies that promote well-being not only today, but in the long term.

ENJOY YOUR ZEST

Because wellness is an individual journey, ZEST offers a wide range of experiences for the Mind, Body & Soul—three pillars of wellness that we believe are vital and interconnected. Whatever your preferences and needs, with ZEST you’ll find it easy and fun to cultivate a rich life of meaning, connection, fulfillment, and purpose.

These are just a few experiences waiting to be discovered:

- *Going back to school* with our Lifelong Learning university seminars.
- *Tasting how delicious* health can be with our FreshZest menu options.
- *Putting a dynamic new spin* on cycling with an energizing spinning class.
- *Enjoying Happy Hour* filled with personable conversation and new friends.





You're always in the loop with LifeLoop

Connected to life, family, and each other.

LifeLoop helps residents and family members communicate, share experiences, and stay connected and involved in each other's lives on a daily basis. As a resident, you can easily connect with other residents to discover interests and hobbies, share photos, and invite friends to join you in an activity—using your phone, tablet or computer.

Family members can join in, sharing photos, sending messages and seeing what you have been up to lately. LifeLoop offers families added comfort by sharing weekly updates on their loved ones' activity engagement and assisting with meeting their needs from anywhere at any time.

Best of all, our team can walk you through setup and provide any support you need, so you can enjoy trying something new without the worry.

Keeping everyone in the loop. It's just another way life at an SRG community makes every day better.

NorthWest
PLACE

INDEPENDENT LIVING RESIDENCES

2420 NW Marshall Street, Portland, OR 97210 | NorthWestPlaceSeniorLiving.com | 503.221.2075



EQUAL HOUSING OPPORTUNITY

AN SRG SENIOR LIVING COMMUNITY





SERVICES & AMENITIES: INDEPENDENT LIVING

NorthWest Place provides a host of services and amenities designed to complement your lifestyle and enrich your life.

Services Included in the Monthly Fee

- Complimentary full breakfast, plus your choice of a delicious lunch or dinner daily
- Weekly housekeeping and flat linen laundry service
- All utilities (except phone) including basic cable TV
- 24-hour emergency call system
- Gracious reception desk
- 24-hour onsite staffing
- Scheduled group transportation
- Full calendar of social, cultural and recreational programs and activities
- Interior and exterior maintenance of all common areas, residences and grounds

Features of Your Independent Living Residence

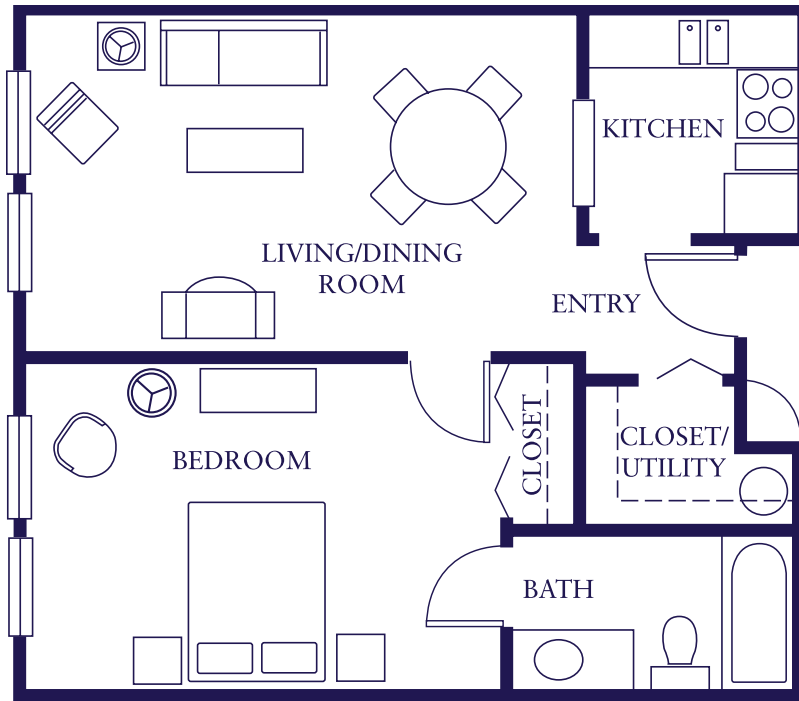
- Spacious studio, one- and two-bedroom floor plans
- Color-coordinated, floor and window coverings
- Fully-equipped kitchen with granite countertops
- Individual climate controls for heating/cooling
- Insulated and sound resistant windows
- Private patios with ground floor models
- Conveniently located elevators and access to common areas
- Washer/dryer
- Fire and smoke detectors and sprinkler system

Community Features and Amenities

- Restaurant-style dining, open 12 hours daily
- Rooftop garden area
- Private meeting/dining rooms
- Spacious covered front porch
- Activities programming
- Lobby and comfortable lounges
- Reception desk
- Gated secure garage
- Landscaped grounds and courtyards
- Convenient location



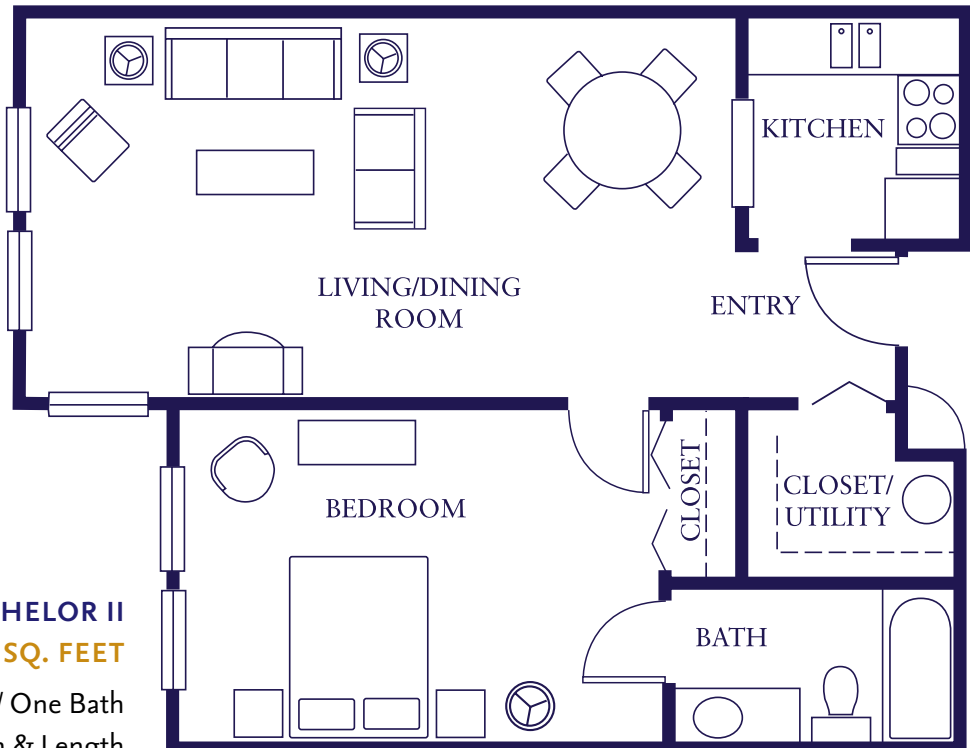
2420 NW Marshall Street • Portland, OR 97210 • P: 503.221.2075 • F: 503.221.3024 • SRGseniorliving.com



ADAMS

636 SQ. FEET

One Bedroom / One Bath



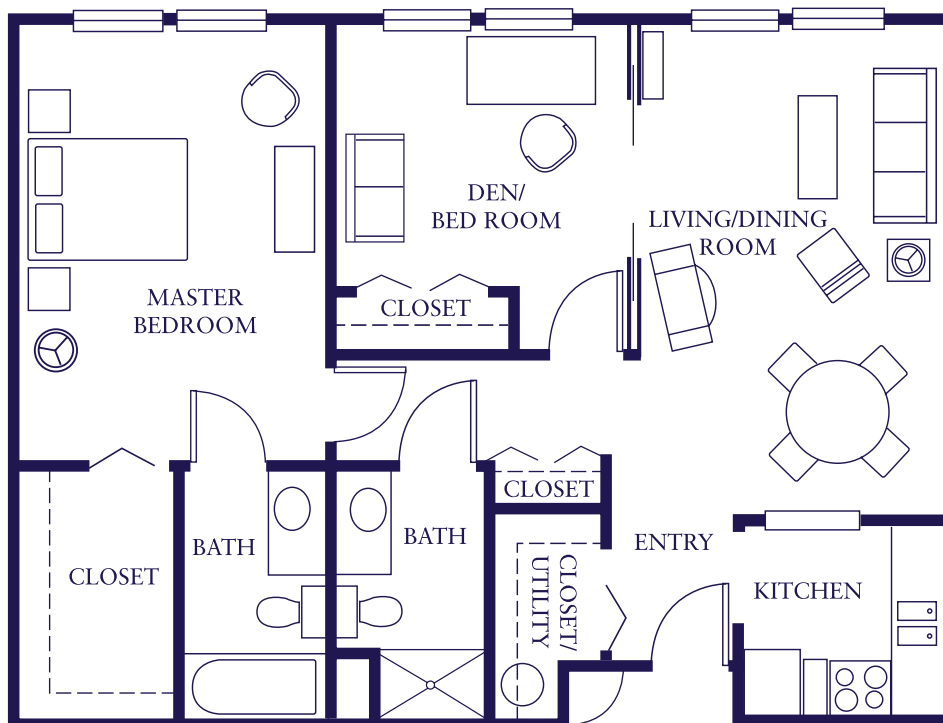
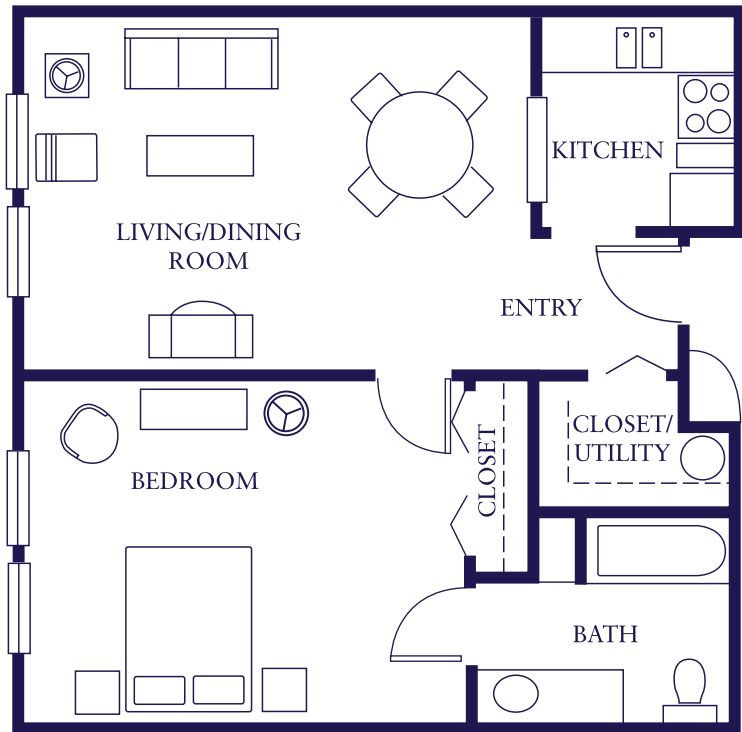
BACHELOR II

736 SQ. FEET

One Bedroom / One Bath
Extra Width & Length

ST HELEN'S
716 SQ. FEET

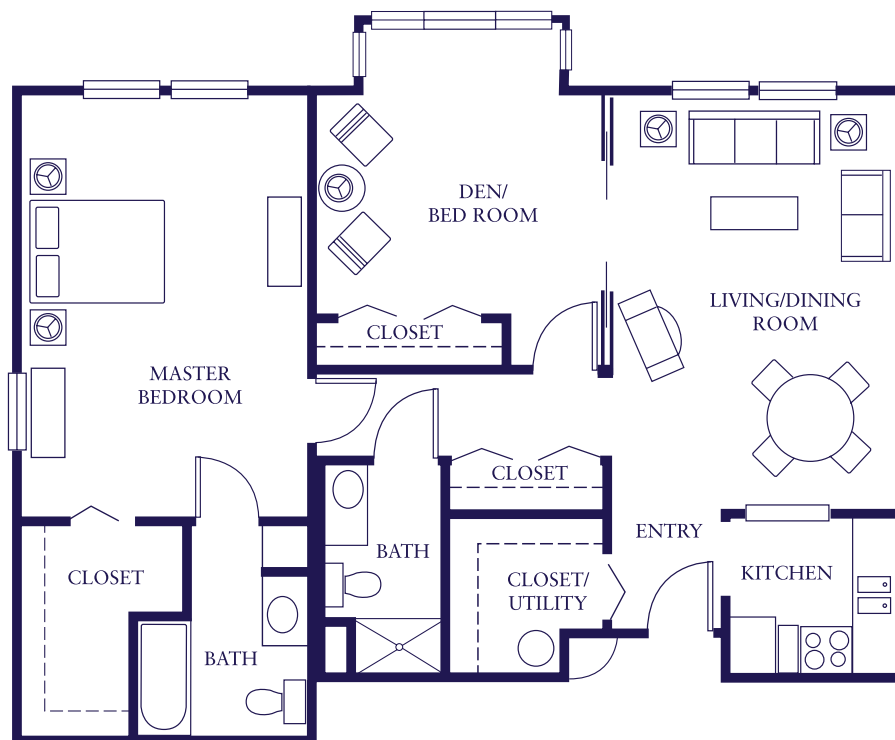
One Bedroom / One Bath / Extra Width



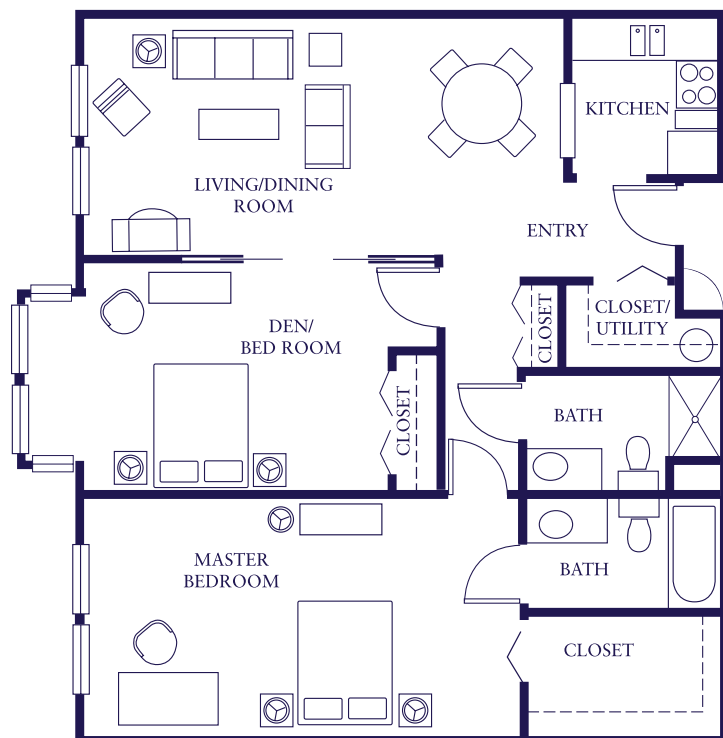
HOOD I
954 SQ. FEET

Two Bedrooms / Two Baths

RAINIER II
1,094 SQ. FEET
 Two Bedrooms with Bay / One Bath
 Extra Width

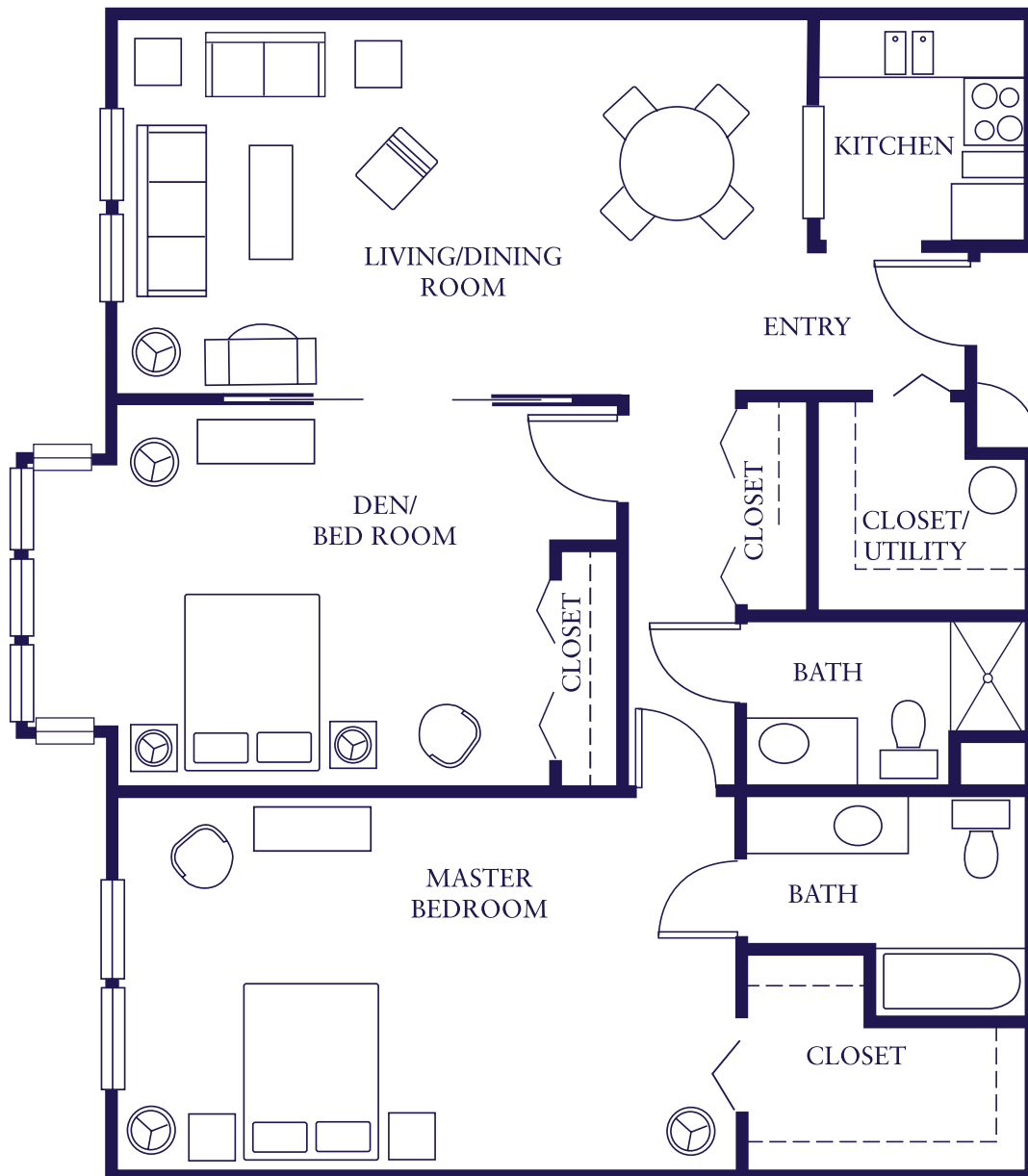


TABOR I
1,158 SQ. FEET
 Two Bedrooms with Bay / Two Baths



JEFFERSON
1,256 SQ. FEET

Two Bedrooms with Bay / Two Baths / Extra Width



Floor plans are representative; actual square footage, dimensions and details may vary.

2420 NW Marshall Street • Portland, OR 97210 • P: 503.221.2075 • F: 503.221.3024 • SRGseniorliving.com



SCHEDULE OF FEES

INDEPENDENT LIVING RESIDENCES

Plan	Residence Type	Sq. Ft.	Service Initiation Fee*	Monthly Fee
Adams	One Bedroom, One Bath	636	\$157,600	\$3,530
Bachelor I	One Bedroom - extra length, One Bath	696	\$176,900	\$3,815
Bachelor II	One Bedroom - extra width & length, One Bath	736	\$188,155	\$4,080
St. Helen's	One Bedroom - extra width, One Bath	716	\$178,510	\$3,990
Hood I	Two Bedrooms, Two Baths	954	\$209,060	\$4,630
Hood II	Two Bedrooms with Bay, Two Baths	978	\$217,110	\$4,670
Cascade I	Two Bedrooms, Two Baths	954	\$213,890	\$4,630
Cascade II	Two Bedrooms with Bay, Two Baths	978	\$218,705	\$4,670
Rainier I	Two Bedrooms - extra width, Two Baths	1033	\$234,790	\$4,905
Rainier II	Two Bedrooms with Bay - extra width, Two Baths	1094	\$255,690	\$5,130
Tabor I	Two Bedrooms - with Bay, Two Baths	1158	\$270,160	\$5,375
Tabor II	Two Bedrooms with Bay - extra length, Two Baths	1182	\$281,420	\$5,375
Jefferson	Two Bedrooms with Bay - extra width, Two Baths	1256	\$313,580	\$5,820

Second Person Fee: \$800/month

Covered Parking: \$75/month

*Service Initiation Fee is a one-time fee paid prior to occupancy and is 70% refundable as per residential care agreement.

Rates effective January 1, 2022. Subject to change without notice.

2420 NW Marshall Street • Portland, OR 97210 • P: 503.221.2075 • F: 503.221.3024



EQUAL HOUSING OPPORTUNITY

AN **SRG** SENIOR LIVING COMMUNITY

SRGSENIORLIVING.COM

