



Affordable Living

As a non-profit organization affordability is one of our top priorities. We don't require any buy-in fees or long term rental contracts. Just a simple month-to-month agreement with utilities, three meals a day, Wi-Fi, housekeeping and weekly laundry of linens are all covered in your monthly rent. For your convenience, Willamette Lutheran Retirement Community offers a beauty/barber shop, storage units, onsite laundromat, multiple recreation rooms including a library and a Wellness Center. When you want to go shopping, have an appointment or are looking for something fun to do you can sign up for a ride on the Willamette Lutheran van.

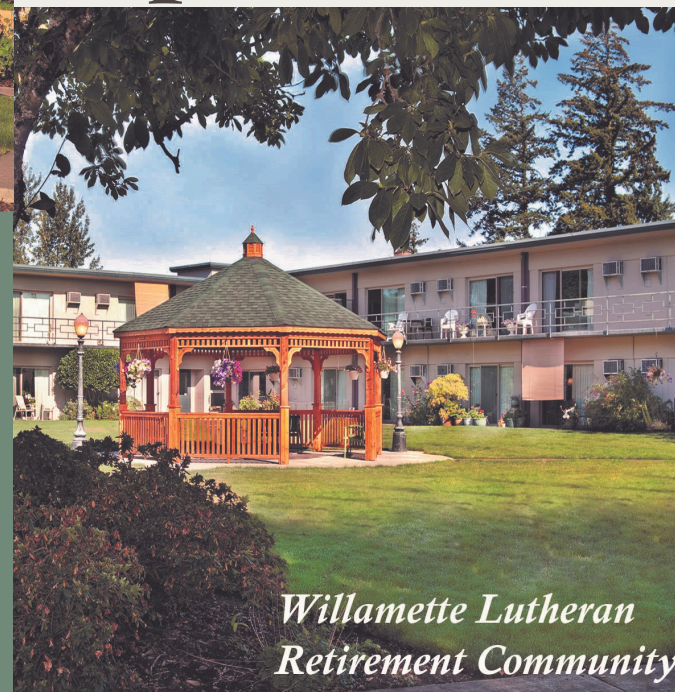
Call today for a guided tour!



Willamette
Lutheran
Retirement
Community



Apartments



*Willamette Lutheran
Retirement Community*

Contact Us



503-393-1491



www.WillametteLutheran.com



7693 Wheatland Rd N
Keizer OR 97303

A lifestyle to call home...

Freedom and Security

It's time for a new home where you're free to garden, read, walk, visit with friends and be as active as you want. Enjoy our active library that holds over 4,000 books; many of them in large print or spend some leisure time in our hobby shop or green house.

Willamette Lutheran provides a home filled with choices, activity rooms, good company, excursions, van services, recreation and social activities.

The benefits of living here are truly endless. You'll find secure grounds, three meals a day in our valley view dining room, a round-the-clock emergency call system, smoke or fire detectors in every living space, and our 24 hour concierge services. Apartments include patios or balconies, large windows, lovely views, Wi-Fi and individually regulated heating and cooling units.



Country Grounds, City Convenience

Take a leisure walk to Clear Lake, stroll the walking paths or enjoy an outdoor barbeque with friends and family. Willamette Lutheran Retirement Community offers all of the comforts of a rural home without the work of maintaining it. We have professional staff who tend to all the little details, you never need to worry about the gutters or lawn mowing again.

Enjoy a quiet agriculture setting but close enough to shopping and medical services to be convenient for visits. With easy access to a golf course, the senior center, wineries, and restaurants.

Peace and Beauty

Your new home is situated on 42 private, peaceful and carefully tended acres. Inside, you'll find Sunday services in our non-denominational chapel and a spacious, bright dining area with a captivating view. Outside you can work in your own garden area or simply gaze at the view from your patio or balcony. Enjoy our roses, fruit trees, annual flowers, and vegetable gardens alongside our park-like setting that will make you proud to invite family and friends over to visit.

Your home is more than just a building. It's music, paintings, your own furniture and books. That's why our spacious apartments, lodges, homes and cottages come unfurnished. You make your new home cozy with your own belongings and way of life. After all, this is your home.



Get In Touch

Contact Information

Phone Number

503-393-1491

Website

www.WillametteLutheran.com



Our Location

7693 Wheatland Rd N Keizer OR 97303



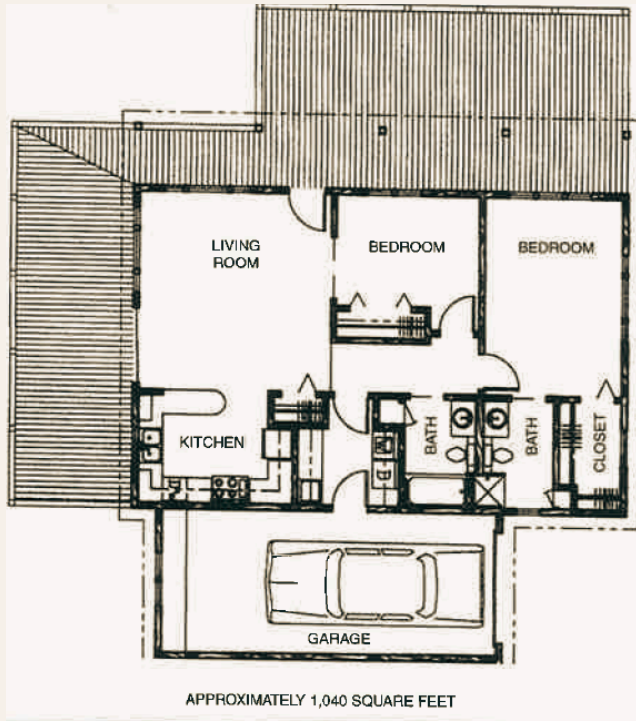
WILLAMETTE LUTHERAN RETIREMENT COMMUNITY COTTAGES

Our cottages offer the luxury of being a part of our warm and lively community. Nestled on 42 acres of natural beauty, we are blessed with a well preserved country setting. Complete with gardens, flowers, manicured grounds and native wild life.



- Van services
- Rose gardens and personal gardening areas
- Public golf course within a mile
- Greenhouse and hobby areas
- Library and billiard rooms
- Wellness Center located on site
- Outings to the beach, museums and other places of interest in Oregon.
- Extensive walking paths including to Clear Lake
- Dining services

THE LUXURY...



Inside you are met with a large open floor plan, vaulted ceilings, pocket doors, a walk-in closet, an abundance of storage, laundry room, extended garage, and full sized kitchens... We want you to live your best life, with none of the responsibilities of maintaining a home.



Safety and Security...

Our cottages are equipped with excellent safety features, including a 24hr emergency call system, baths equipped with non slip features and drop down benches, smoke and fire detectors.

Willamette Lutheran Retirement Community is a lifestyle of luxury... Schedule a tour today.

