

The background of the image is a serene landscape. In the foreground, there are green grasses and small white and yellow wildflowers. A calm lake reflects the sky and the surrounding forest. The middle ground is filled with a dense forest of tall, dark evergreen trees. In the background, a range of mountains is visible under a soft, hazy sky. The overall color palette is muted greens, blues, and greys, with a warm, golden light suggesting sunrise or sunset.

# EMERALD CITY

---

## SENIOR LIVING







# WELCOME TO EMERALD CITY SENIOR LIVING

A REJUVENATED SENIOR LIVING EXPERIENCE IN THE PACIFIC NORTHWEST'S PREMIER CITY, SEATTLE









## **EMERALD CITY SENIOR LIVING**

Emerald City is one of the finest assisted living and memory care communities in the region, fostering a unique lifestyle that encourages residents to maintain their independence with the comfort of knowing a reliable team of caring professionals is always available to them.

## **VIBRANT COMMUNITY**

Nestled between Lake Washington and Green Lake in northern Seattle, Emerald City offers unparalleled service, impeccable amenities and thoughtfully designed surroundings that inspire residents to live their best lives.

Our community is full of opportunities for you or your loved ones to live an exciting, adventurous, social and luxurious lifestyle with top-of-the-line amenities and services to accommodate our residents' individual lifestyles. We are a community focused on helping you maintain a vibrant, purposeful life. Our community is designed to provide a lifestyle that enhances your life as you age.





LIVING AT EMERALD CITY WILL HELP YOU  
LIVE YOUR BEST LIFE.





## **ASSISTED LIVING**

Assisted living is an ideal solution for those who choose or require help with their daily living needs, but still wish to be as independent as possible. When you choose Emerald City Senior Living, you're choosing to have the health and wellness support you desire as well as the diverse programming and vibrant lifestyle you deserve.



## **PEACE OF MIND TO LIVE FREELY**

Enjoy the freedom of living in your own apartment home, with the peace of mind of knowing access to 24-hour support is always available to you.









*Honor the past, connect with the present, inspire the future.*

## **GENERATIONS MEMORY CARE**

We believe deeply in providing personalized and tailored care for each of our residents. This is especially true for our residents who are living with dementia and Alzheimer's. This is why we have created Generations Memory Care for our community.

## **UNPARALLELED CARE**

Generations Memory Care follows the philosophy of a person-centric culture where one is a whole person first, the person they were and still are, and not identified by their disease or behaviors. We strive to celebrate and highlight the abilities of those we serve.





## EMERALD CITY CARE PARTNERS

As a community with Generations Memory Care, we require our staff, known as care partners, to complete extensive certified training to better support residents living with memory loss. We emphasize techniques, teachable moments and meaningful engagement that lead to our care partners' making connections with each individual. Our care partners undergo extensive training in this process when hired, and are required to attend additional education sessions throughout the year.

Training and techniques taught in the program are inspired by some of the most respected leaders in the field of Alzheimer's and dementia care. These educational opportunities create an immersive environment focusing on the individual's strengths to foster moments of achievement.

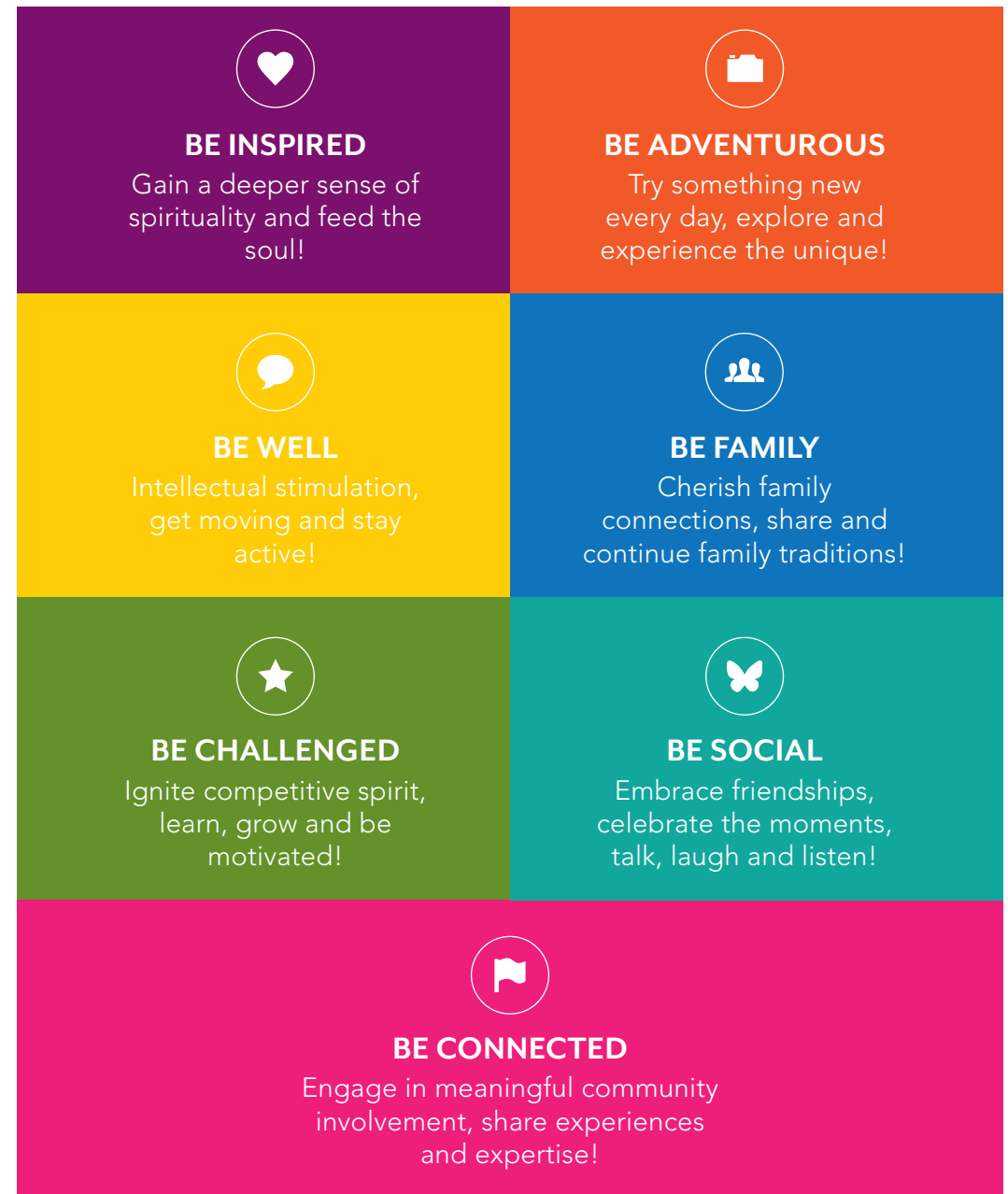






Living a vibrant life at any age is a life worth living. At Emerald City, residents take part in a special experience called Vibrant Life®. The program is an innovative approach designed to enhance and enrich our residents' lives with well-rounded and meaningful experiences. Thoughtfully designed to connect you with family, friends and the community, our Vibrant Life® program truly inspires, challenges – even dares you to be adventurous. With a host of optional outings, you create your own schedule based on your interests, preferences, routines and abilities. Whether it is morning exercise, a sing-along at the piano, a trip to local attractions or a dance with entertainment provided by local musicians, it's your choice to join in the fun.

## THE SEVEN MAIN ELEMENTS TO LIVING A VIBRANT LIFE®







## **REFINED APARTMENT HOMES, COMMUNITY SPACES AND AMENITIES**

Emerald City Senior Living offers beautifully appointed studio, one- and two-bedroom apartment homes, where residents will enjoy an abundance of thoughtful amenities. From an on-site salon, where you can get the pampering you deserve, to multiple common areas available for socializing and entertaining, the entire community is your home!









Emerald City is pleased to offer the Elevate® dining experience, which turns meals into culinary celebrations that inspire the engagement of our residents, families and friends. Our goal is to create meaningful connections through the dining experience.

A meal is deeply personal, and sharing meals connects cultures, ethnicities and people of all ages. Elevate® aims to honor our residents' journeys through life by highlighting their signature recipes, to find ways to use food to give back to the community and to break the bonds of traditional culinary programs.



## GENERATIONS MEMORY CARE SERVICES & AMENITIES

Generations Memory Care residents enjoy an abundance of amenities available in a specially designed neighborhood, focusing on the whole person through the philosophy of a person-centric culture.

### GENERATIONS AMENITIES

- Spacious and bright living spaces
- Restaurant-style dining
- Access to secured outdoor courtyards
- Highly trained and compassionate staff
- Choice of daily life activities

### GENERATIONS SERVICES

- Assistance with activities of daily living
- Access to a care staff 24 hours a day, seven days a week
- Daily innovative and research-based programming
- Family education and support groups







9001 Lake City Way NE, Seattle, WA 98115  
(206) 729-1200 | [EmeraldCitySeniorLiving.com](http://EmeraldCitySeniorLiving.com)

*Professionally Managed by Integral Senior Living*

